

Corrigendum

In Tiong *et al.* (BJP, 2010) there is an error in Fig. 3A(b). The actin blot for PKC α (cytosolic fraction) was inadvertently obtained from a different gel to the PKC α blots.

To re-affirm our data, we have repeated these experiments with both PKC α and β -actin blotted from the same gel (n = 6). The new data (shown below) fully support the original data.

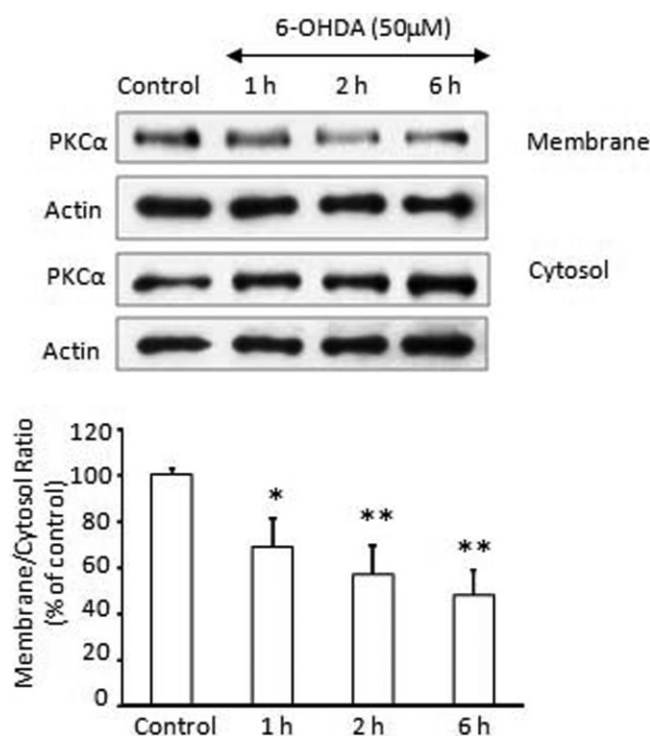


Figure 3A (b)

In addition, in Fig. 2 of Tiong *et al.* (2010), the representative bands of TH and β -tubulin presented were all selected from the same gel but were re-ordered in the figure. The bands were inserted in the order of presentation in the bar chart. This should have been indicated by separating the bands with solid vertical lines.

In order to clarify this error, the experiment was repeated (Supplementary figure) the results of which confirmed the original data presented in Fig 2.

Furthermore, similar results to these have been reported by other laboratories (Levites *et al.*, 2002; Kida *et al.*, 2011).

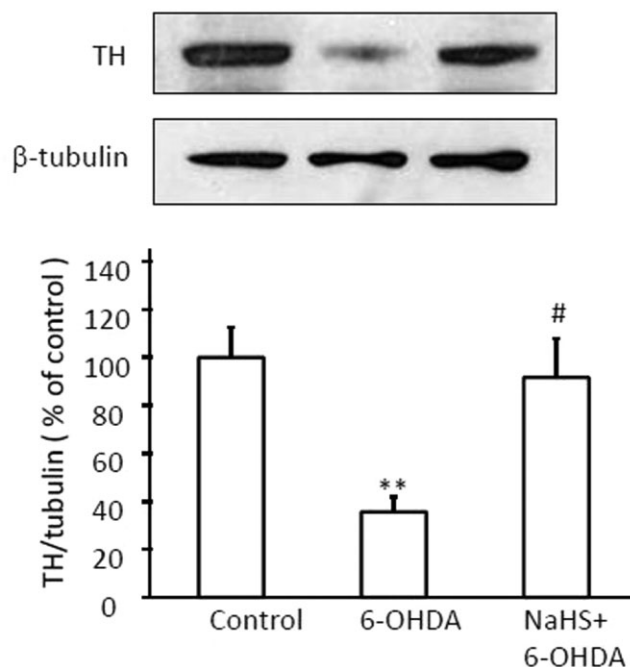


Figure 2

The authors apologize for the errors and any inconvenience it may have caused.

References

- Tiong CX, Lu M, Bian JS (2010). Protective effect of hydrogen sulphide against 6-OHDA-induced cell injury in SH-SY5Y cells involved PKC/PI3K/Akt pathway. *Br J Pharmacol* 161: 467–480.
- Kida K, Yamada M, Tokuda K, Marutani E, Kakinohana M, Kaneki M, Ichinose F (2011). Inhaled hydrogen sulfide prevents neurodegeneration and movement disorder in a mouse model of Parkinson's disease. *Antioxid Redox Signal* 15: 343–352.
- Levites Y, Amit T, Youdim MB, Mandel S (2002). Involvement of protein kinase C activation and cell survival/ cell cycle genes in green tea polyphenol (-)-epigallocatechin 3-gallate neuroprotective action. *J Biol Chem* 277: 30574–30580.